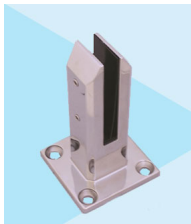


Square Base Plated Spigot for Glass Balustrade or Pool Fence

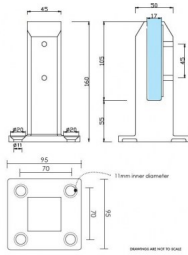


DIYGLASS
www.diyglass.com.au

Square Base Plate Spigot



DIYGLASS
www.diyglass.com.au



- Easy Top Mount Base Plate Installation
- Use for Glass Balustrade or Glass Pool Fence
- Friction Fit Glass (no holes in glass required)
- Suits 12mm thick glass
- 2205 Grade Stainless Steel
- 45mm Front profile
- 4 x 11mm Counter Sunk Holes for timber screw or Countersunk bolt installation
- Suitable for Glass Balustrade or Pool Fence Applications
- Load test certificates available if required.
- Available in Mirror or Satin finish

[Click Here to view to Base Plate Spigot installation guide](#)

Rating: Not Rated Yet

Price
\$ 61.45

\$ 61.45

[Ask a question about this product](#)

Description

- Easy Top Mount Base Plate Installation
- Use for Glass Balustrade or Glass Pool Fence
- Friction Fit Glass (no holes in glass required)
- Suits 12mm thick glass
- 2205 Grade Stainless Steel
- 45mm Front profile
- 4 x 11mm Counter Sunk Holes for timber screw or Countersunk bolt installation

- Suitable for Glass Balustrade or Pool Fence Applications
- Load test certificates available if required.
- Available in Mirror or Satin finish

[Click Here to view to Base Plate Spigot installation guide](#)