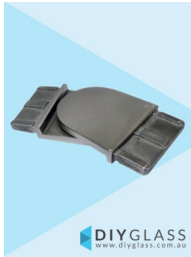


## 50x10mm Adjustable Horizontal Joiner for Glass Balustrade Offset Rail

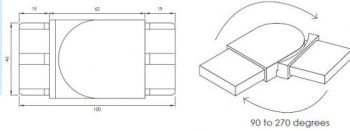


DIYGLASS  
www.diyglass.com.au

50x10mm Adj. Horizontal Joiner for Glass Offset Rail



DIYGLASS  
www.diyglass.com.au



90 to 270 degrees

- Joins 2 lengths of 50x10mm Tube at a change of horizontal direction.
- From Straight rail, achieve up to 90 degrees left or right.
- 316 grade Stainless Steel
- Fit by Welding or epoxy glue
- Available in Mirror or satin finish

Rating: Not Rated Yet

**Price**  
\$ 27.55

\$ 27.55

[Ask a question about this product](#)

### Description

- Joins 2 lengths of 50x10mm Tube at a change of horizontal direction.
- From Straight rail, achieve up to 90 degrees left or right.
- 316 grade Stainless Steel
- Fit by Welding or epoxy glue
- Available in Mirror or satin finish