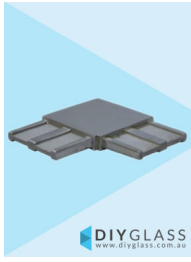
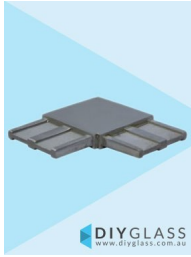


50x10mm 90 Degree Joiner for Glass Balustrade Offset Rail

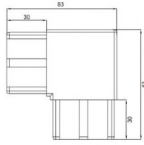


DIYGLASS
www.diyglass.com.au

50x10mm 90 Degree Joiner for Glass Offset Rail



DIYGLASS
www.diyglass.com.au



- Joins 2 lengths of 50x10mm Tube at a 90 Degree Angle
- 316 grade Stainless Steel
- Fit by Welding or epoxy glue
- Available in Mirror or satin finish

Rating: Not Rated Yet

Price
\$ 15.25

\$ 15.25

[Ask a question about this product](#)

Description

- Joins 2 lengths of 50x10mm Tube at a 90 Degree Angle
- 316 grade Stainless Steel
- Fit by Welding or epoxy glue
- Available in Mirror or satin finish