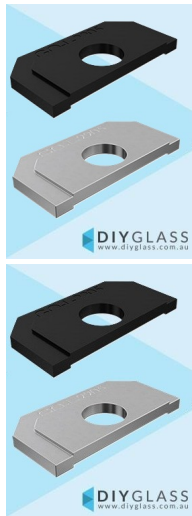


3mm Packers for Edge Mount Spigot



3mm Spigot Packer – For Edgemount Spigot Installation

Ensure a level and secure glass installation with our **3mm Spigot Packer**, specifically designed for use under **Edgemount Spigots**. This durable spacer allows for precise height adjustments during installation, ideal for correcting uneven surfaces or minor slopes.

Key Features

- **3mm thickness** – perfect for precision height adjustments
- Custom-fit for **Edgemount (Madrid Facemount) Spigots**
- **High-strength Stainless** construction for durability and long-term use
- Helps achieve **level glass alignment** on sloped or uneven surfaces
- **Easy to install** – simply place under the spigot before fixing
- **Stackable** with other packers for custom leveling solutions
- Suitable for **decking, concrete, or tiled surfaces**

A simple yet essential fitting for professional and DIY glass fencing and balustrade installations.

Rating: Not Rated Yet

Price

\$ 0.00

\$ 0.00

[Ask a question about this product](#)

Description

3mm Spigot Packer – For Edgemount Spigot Installation

Ensure a level and secure glass installation with our **3mm Spigot Packer**, specifically designed for use under **Edgemount Spigots**. This durable spacer allows for precise height adjustments during installation, ideal for correcting uneven surfaces or minor slopes.

Key Features

- **3mm thickness** – perfect for precision height adjustments
- Custom-fit for **Edgemount (Madrid Facemount) Spigots**
- **High-strength Stainless** construction for durability and long-term use
- Helps achieve **level glass alignment** on sloped or uneven surfaces
- **Easy to install** – simply place under the spigot before fixing
- **Stackable** with other packers for custom leveling solutions
- Suitable for **decking, concrete, or tiled surfaces**

A simple yet essential fitting for professional and DIY glass fencing and balustrade installations.