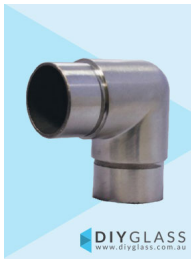


38mm 90 Degree Radius Joiner for Glass Balustrade Offset Rail

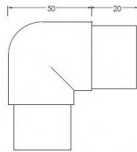


DIYGLASS
www.diyglass.com.au

38mm 90 Degree Radius Joiner for Glass Offset Rail



DIYGLASS
www.diyglass.com.au



* ALSO SUITABLE AS A VERTICAL JOINER

- Joins 2 lengths of 38mm Tube at a 90 degree angle
- 316 grade Stainless Steel
- Fit by Welding or epoxy glue
- Available in Mirror or satin finish

Rating: Not Rated Yet

Price
\$ 21.40

\$ 21.40

[Ask a question about this product](#)

Description

- Joins 2 lengths of 38mm Tube at a 90 degree angle
- 316 grade Stainless Steel
- Fit by Welding or epoxy glue
- Available in Mirror or satin finish