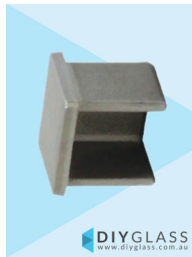
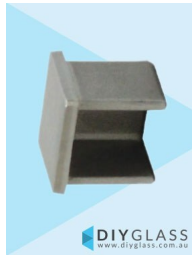


25x21mm End Cap for Glass Balustrade / Pool Fence Top Rail

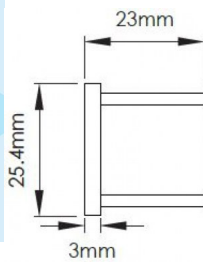


DIYGLASS
www.diyglass.com.au

25x21mm End Cap for Glass Balustrade Top Rail



DIYGLASS
www.diyglass.com.au



- 316 grade Stainless Steel
- Use for Glass Balustrade or Glass Pool Fence Top Rail
- Fit by Welding or epoxy glue
- Available in Mirror or satin finish

Rating: Not Rated Yet

Price

\$ 6.00

\$ 6.00

[Ask a question about this product](#)

Description

- 316 grade Stainless Steel
- Use for Glass Balustrade or Glass Pool Fence Top Rail
- Fit by Welding or epoxy glue
- Available in Mirror or satin finish