

## 25.4mm End Cap for Glass Balustrade / Pool Fence Top Rail

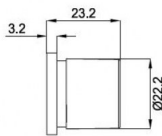


DIYGLASS  
www.diyglass.com.au

25.4mm End Cap for Glass Top Rail



DIYGLASS  
www.diyglass.com.au



- 25.4mm Slotted Top Rail End Cap
- Use for Glass Balustrade or Glass Pool Fence Top Rail
- 316 grade Stainless Steel
- Fit by Welding or epoxy glue
- Available in Mirror or satin finish

Rating: Not Rated Yet

**Price**

\$ 6.00

\$ 6.00

[Ask a question about this product](#)

### Description

- 25.4mm Slotted Top Rail End Cap
- Use for Glass Balustrade or Glass Pool Fence Top Rail
- 316 grade Stainless Steel
- Fit by Welding or epoxy glue
- Available in Mirror or satin finish