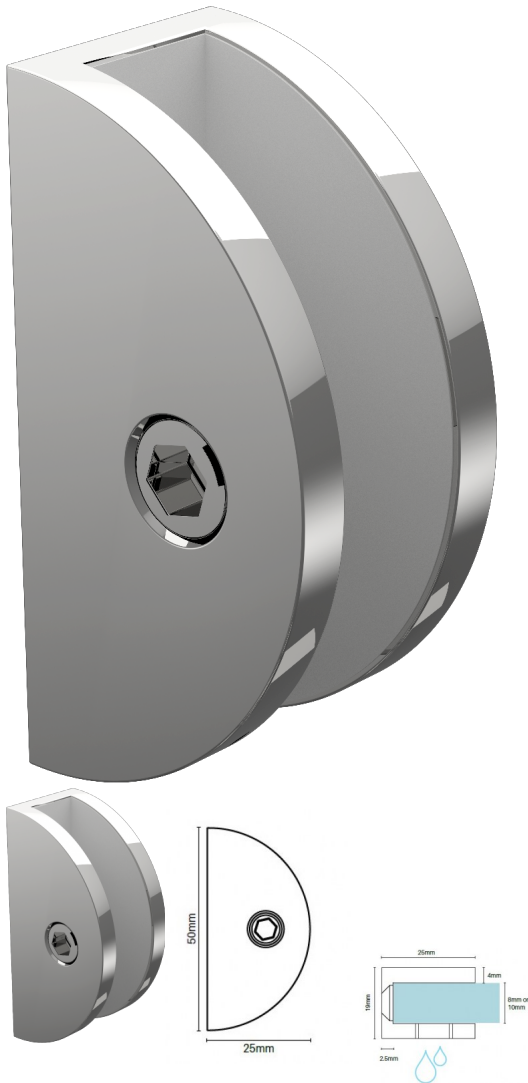


## Round Wall Bracket - Chrome Plated - For Shower Screen



Used to fix Hinge and Return/Fixed panels to the wall.

3 Per Panel recommended

- Round Wall Bracket
- 2.5mm Gap between glass and wall
- Chrome Plated Finish
- Slimline half round profile
- Suitable for 8mm & 10mm Glass
- 1 x Compression/Friction screws
- No holes in glass required
- Made from solid brass
- 1 x Fixing screw and Clear Gaskets Provided

Silicon must be used along glass edge when friction brackets used

Some people also use these along the floor however we do not recommend this as the screw will break the waterproofing membrane, the whole glass weight will be positioned on the bracket rather than spread across the length of the sheet and the glass will be held 3mm off the floor.

## Shower Screen Round Wall Bracket Chrome Plated

---

Rating: Not Rated Yet

**Price**

\$ 8.00

\$ 0.73

[Ask a question about this product](#)

### Description

Used to fix Hinge and Return/Fixed panels to the wall.

3 Per Panel recommended

- Round Wall Bracket
- 2.5mm Gap between glass and wall
- Chrome Plated Finish
- Slimline half round profile
- Suitable for 8mm & 10mm Glass
- 1 x Compression/Friction screws
- No holes in glass required
- Made from solid brass
- 1 x Fixing screw and Clear Gaskets Provided

Silicon must be used along glass edge when friction brackets used

Some people also use these along the floor however we do not recommend this as the screw will break the waterproofing membrane, the whole glass weight will be positioned on the bracket rather than spread across the length of the sheet and the glass will be held 3mm off the floor.

// //