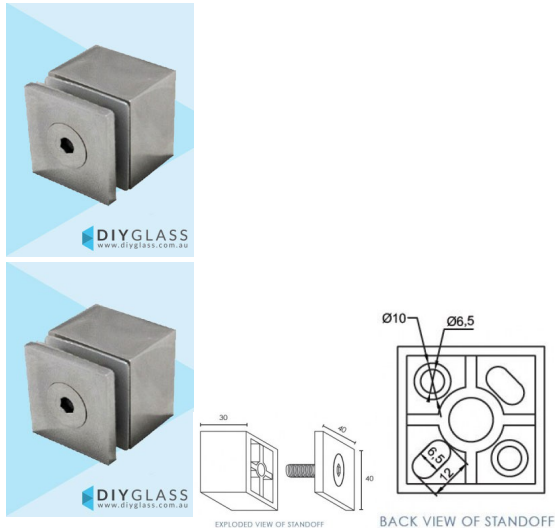


40mm Square Cap x 30mm Body Standoff for Face Mount Glass Balustrade / Pool Fence



- 40mm Square Cap
- 30mm High Body
- Requires a 20-22mm Diameter hole in the glass
- Install using M12 Threaded Rod for Masonry
- Install using M12 Metric to Lag Screw for timber
- Kit includes: Cap, Body, 2 x Plastic Washers and 1 x Bush
- For Face Mount Glass Balustrade / Pool Fence

M12 Fixing rods sold separately

Rating: Not Rated Yet

Price

\$ 27.55

\$ 2.50

[Ask a question about this product](#)

Description

- 40mm Square Cap
- 30mm High Body
- Requires a 20-22mm Diameter hole in the glass
- Install using M12 Threaded Rod for Masonry
- Install using M12 Metric to Lag Screw for timber
- Kit includes: Cap, Body, 2 x Plastic Washers and 1 x Bush
- For Face Mount Glass Balustrade / Pool Fence

40mm Square Cap, 30mm Body Glass Standoff

M12 Fixing rods sold separately

///