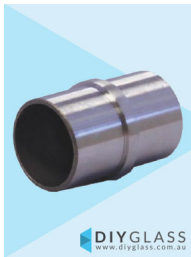
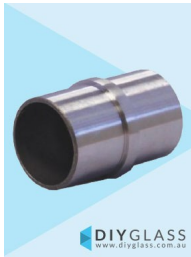


## 38mm In-Line Joiner for Glass Balustrade Offset Rail

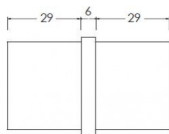


DIYGLASS  
www.diyglass.com.au

38mm In-Line Joiner for Glass Offset Rail



DIYGLASS  
www.diyglass.com.au



- Joins 2 straight lengths of 38mm Tube
- 316 grade Stainless Steel
- Fit by Welding or epoxy glue
- Available in Mirror or satin finish

Rating: Not Rated Yet

**Price**

\$ 6.95

\$ 0.63

[Ask a question about this product](#)

### Description

- Joins 2 straight lengths of 38mm Tube
- 316 grade Stainless Steel
- Fit by Welding or epoxy glue
- Available in Mirror or satin finish

// //