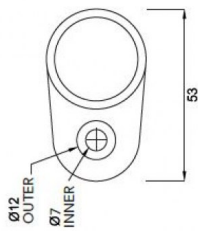


## 25.4mm Wall Plate for Glass Balustrade / Pool Fence Top Rail



25.4mm Wall Plate for Glass Top Rail



- Used to attach 25.4mm slotted rail to flat post or wall
- Use for Glass Balustrade or Glass Pool Fence Top Rail
- 316 grade Stainless Steel
- Fit by Welding or epoxy glue
- Available in Mirror or satin finish

Rating: Not Rated Yet

**Price**  
\$ 13.70

\$ 1.25

[Ask a question about this product](#)

### Description

- Used to attach 25.4mm slotted rail to flat post or wall
- Use for Glass Balustrade or Glass Pool Fence Top Rail
- 316 grade Stainless Steel
- Fit by Welding or epoxy glue
- Available in Mirror or satin finish

// //