

25.4mm Adjustable Vertical Joiner for Glass Balustrade / Pool Fence Top Rail

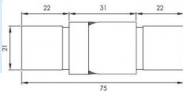


DIYGLASS
www.diyglass.com.au

25.4mm Adj. Vertical Joiner for Glass Top Rail



DIYGLASS
www.diyglass.com.au



- Joins 25.4mm Slotted Tube on a vertical angle. Eg down stairs
- Use for Glass Balustrade or Glass Pool Fence Top Rail
- 316 grade Stainless Steel
- Fit by Welding or epoxy glue
- Available in Mirror or satin finish

Rating: Not Rated Yet

Price
\$ 26.95

\$ 2.45

[Ask a question about this product](#)

Description

- Joins 25.4mm Slotted Tube on a vertical angle. Eg down stairs
- Use for Glass Balustrade or Glass Pool Fence Top Rail
- 316 grade Stainless Steel
- Fit by Welding or epoxy glue
- Available in Mirror or satin finish

// //